



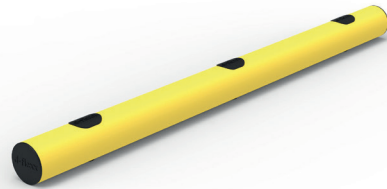
d-flexx

Tender Text

MIKE Kerb Barrier

Compatible with

**CHARLIE, DELTA, ECHO,
FOXTROT, GOLF, HOTEL,
KILO and LIMA**



Kerb barrier to separate and protect walls and assembly lines in low-grounded areas. It is also used a working station protection or beneath d-flexx CHARLIE, DELTA, ECHO, FOXTROT, GOLF, HOTEL, KILO and LIMA for protecting peoples achilles and feet. Barriers must be produced in nontoxic polymer (PE) pipe in Ø140mm. The mounting bracket must be nylon.

For safety reasons the primary colour must be Yellow RAL1018. Chemical resistance must be High according to ISO/TR 10358. The kerb barrier must be operational within the temperature range of -40° to +50° Celsius. Barriers must be delivered pre-assembled to reduce installation time limited to drill fixing holes. The barrier must have a minimum warranty of 5 years.