



MIKE

Kerb Barrier



Compatible with

**CHARLIE, DELTA, ECHO,
FOXTROT, GOLF, HOTEL,
KILO and LIMA**

Description

The MIKE kerb barrier is specifically designed to offer robust protection for walls and assembly lines in low-ground areas. Due to its kerb-like construction, it is installed close to the ground and primarily functions as a guide kerb or wheel stopper. MIKE effectively prevents collisions in low-height areas, ensuring critical infrastructure remains undamaged by forklifts, vehicles, or other moving equipment. This kerb barrier is an ideal solution for enhancing safety and longevity in production and logistics facilities.

Applications:

- Industrial production areas
- Assembly lines
- Logistics and warehouse environments
- Parking areas and vehicle pathways

Features and Benefits:

- Low-profile kerb design prevents collisions with low-ground obstacles
- Strong protection for walls and sensitive equipment
- Durable material construction for extended service life
- Fast and simple installation
- Low-maintenance with broad application versatility
- Length: Available in various customizable lengths

Compatibility:

Fully compatible with the following products: CHARLIE, DELTA, ECHO, FOXTROT, GOLF, HOTEL, KILO, and LIMA.

Technical Information

Operational Temperature Range:	-40°C up to +50°C / -40°F up to +112°F
Ignition Temperature:	350-360°C / 662 - 680°F
Flash Point:	350-360°C / 662 - 680°F
Toxicity:	Nontoxic
Chemical Resistance:	High-ISO / TR 10358
UV Stability	Gray scale: 5/5
Changes to material after 5 years:	Blue Wool scale: 8/8 Tensile strength: No changes
Static Rating (surface resistivity):	10 ¹⁵ -10 ¹⁶ Ω
Standard Warranty:	5 Years
Fixations:	Concrete screw, Zinc coated, Size Ø12x110 mm
Deflection zone:	250mm / 9,84in

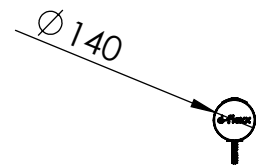
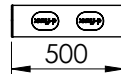
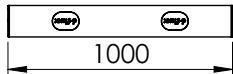
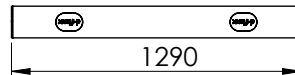
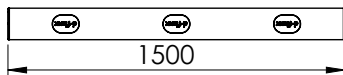
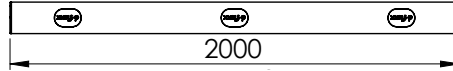
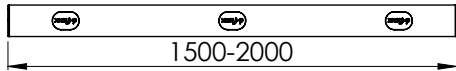
Scan or click to review



*Maintenance Guide
Assembly Guide
Videos
Tender Text
Warranty*



Specifications



Measurements mm vs in

	mm	in
Diameter	140	5,51
Height	140	5,51
Width 1	500	19,69
Width 2	1000	39,37
Width 3	1290	50,79
Width 4	1500	59,06
Width 5	2000	78,74
Width 6	1500-2000	59,06-78,74

Max. force to bolt 21 kN

