



CHARLIE

Modular Traffic Barrier



Tested Impact Energy
according to TÜV

61.500 Joule

At 22.5° Impact, 4.9 km/h
(3,04 mph) and 4.320 kg (9524 lbs)
on a C20/25 concrete floor and
max. force to bolt at 21 kN.



Description

The CHARLIE Traffic Barrier is a TÜV certified, robust and highly durable safety solution designed to protect personnel, machinery, and infrastructure in high-traffic environments such as warehouses, factories, and industrial facilities. Constructed from flexible polymer, the barrier efficiently absorbs impacts and reduces the risk of damage in case of collisions with vehicles like forklifts or pallet trucks.

Featuring a modular and easy-to-install design, the CHARLIE Traffic Barrier adapts seamlessly to various operational environments, ensuring maximum safety without interrupting workflow. Its flexibility retains its shape and protective capabilities even after significant impacts, making it a long-lasting safety investment.

The CHARLIE Traffic Barrier adheres to the PAS13 code of practice, a crucial standard for safety barriers in workplace environments. Certified by TÜV, the barrier has been rigorously tested and meets strict safety and quality requirements. By selecting the d-flexx CHARLIE Traffic Barrier, you are ensuring certified protection in line with the latest industry standards, offering enhanced security and peace of mind in high-risk working conditions.

Technical Information

Operational Temperature Range:	-40°C up to +50°C / -40°F up to +112°F
Ignition Temperature:	350-360°C / 662 - 680°F
Flash Point:	350-360°C / 662 - 680°F
Toxicity:	Nontoxic
Chemical Resistance:	High-ISO / TR 10358
UV Stability	Gray scale: 5/5
Changes to material after 5 years:	Blue Wool scale: 8/8 Tensile strength: No changes
Static Rating (surface resistivity):	1015-1016 Ω
Standard Warranty:	5 Years
Fixations:	Concrete screw, Zinc coated, Size Ø12x80 mm
Deflection zone:	250mm / 9,84in

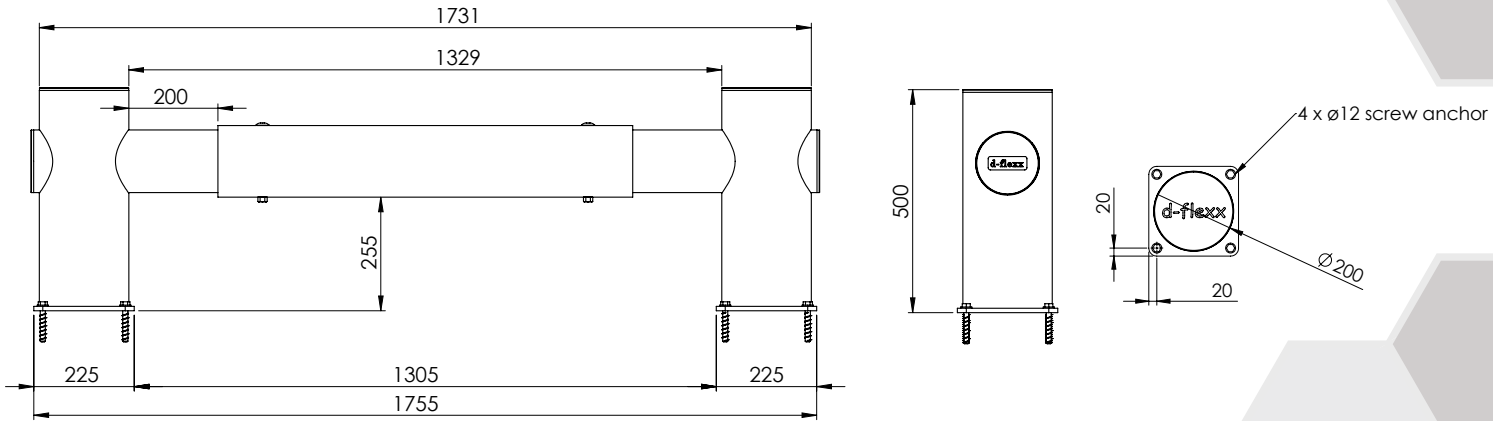
Scan or click to review



*Maintenance Guide
Assembly Guide
Videos
Tender Text
Warranty*

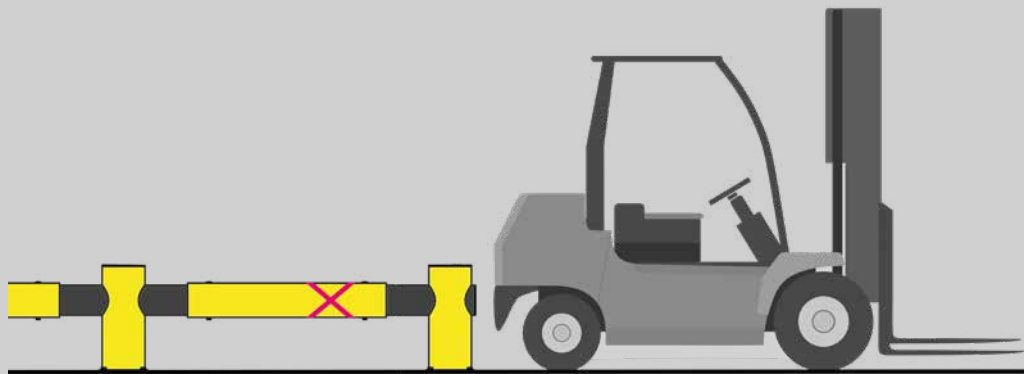


Specifications

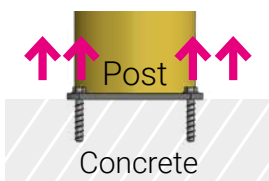


Measurements mm vs in

	mm	in
Diameter	200	7,87
Height	500	19,69
Space	255	10,04
Width 1	200	7,87
Width 2	1305	51,38
Width 3	1329	52,36
Width 4	1731	69,09
Width 5	1755	69,09
Footplate	225	8,86
Pos. drill holes	20	0,79



Max. force to bolt 21 kN



Impact Test CHARLIE

Mid Rail Max. Energy (Joules)	90°	67,5°	45°	22,5°
	9.000	10.500	18.000	61.500

End post max. energy (Joules) - 90°	4.000
-------------------------------------	-------

Mid post max. energy (Joules) - 90°	4.000
-------------------------------------	-------